



the ultimate guide to

COMMERCIAL SNOW REMOVAL

FROM POWERBLANKET



TABLE OF CONTENTS

- 1 intro
- 2 winter safety
- 4 trucks + attachments
- 5 snow blowers
- 6 snow melt
- 7 heated ground systems
- 8 snow melting mats



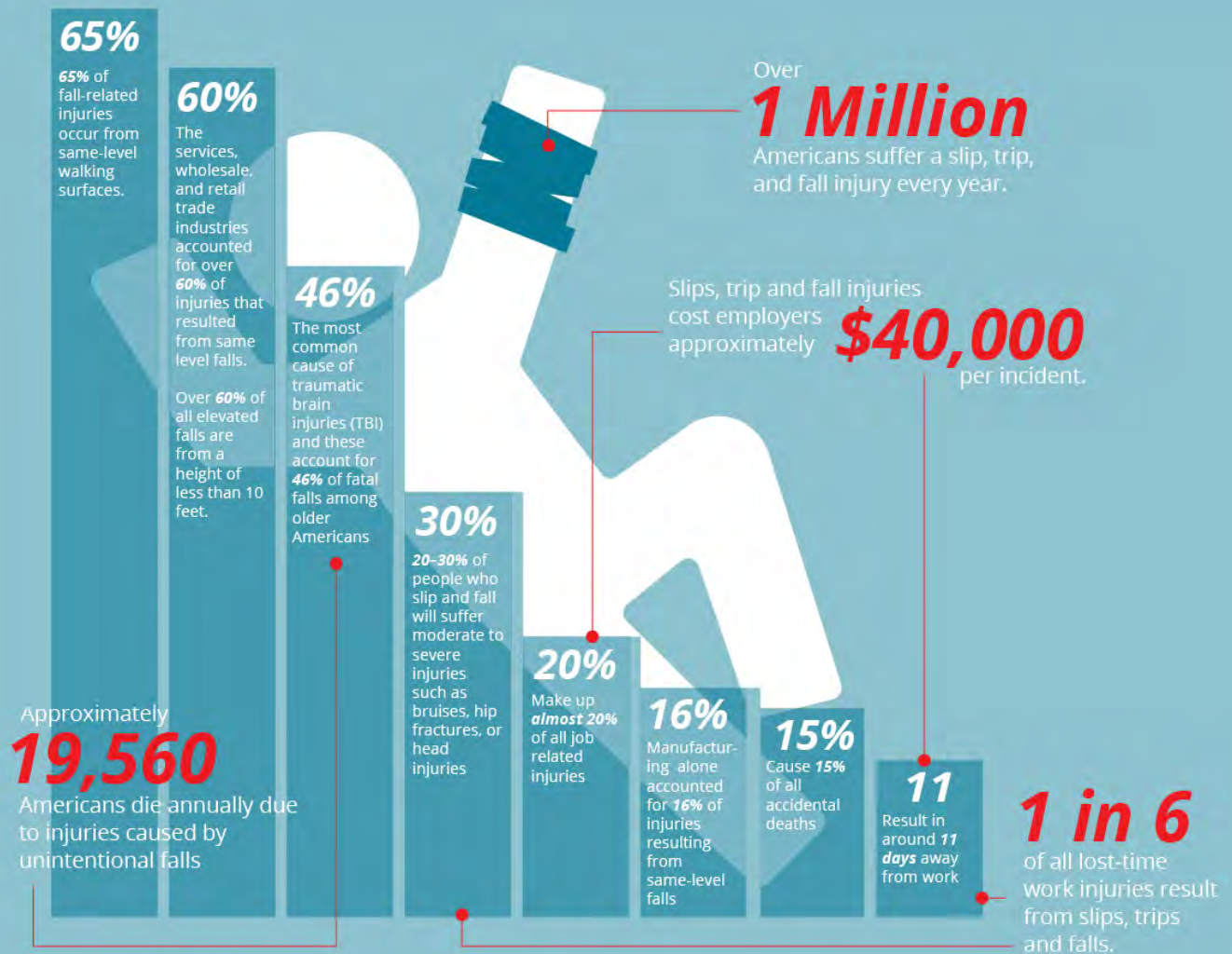
INTRODUCTION

Commercial property owners and managers have an important responsibility during snowy weather. Properties must be kept safe for all customers, visitors, residents, and/or tenants. Unattended snow and ice can lead to slow business, property damage, injuries, and expensive lawsuits.

It's crucial that a well-organized plan be in place before any winter weather hits. A winter-safety plan should include protocol for each area of your property before, during, and after winter weather. Different equipment and solutions might be required for different areas of a property.

Winter safety equipment and solutions include plows, salt spreaders, snow blowers, snow melts, underground solutions, and snow melting mats.

WINTER SAFETY

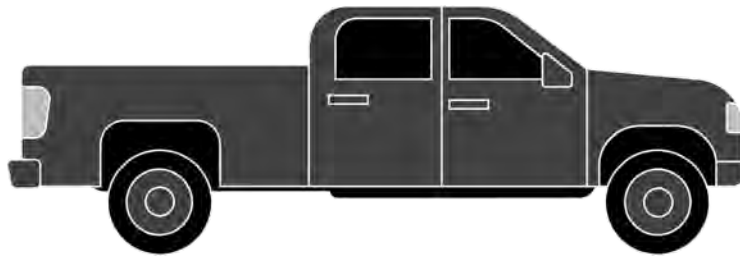


According to the Center for Disease Control and Prevention (CDC) and the Bureau of Labor Statistics (BLS)

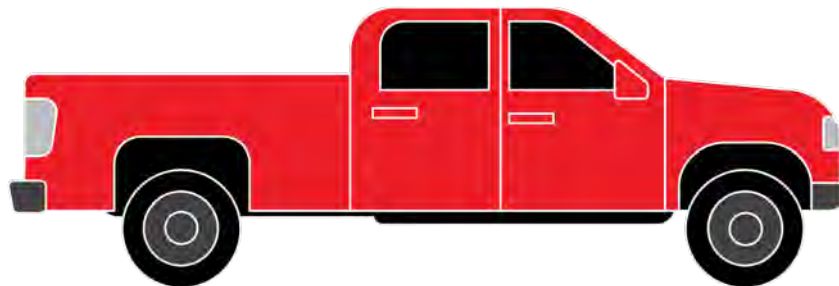
When slippery winter weather settles in, protecting your employees and customers from slips and falls should be a high priority. Slips and falls account for over 1 million visits to the hospital per year. Additionally, Slips and falls represent the primary cause of lost days from work, and are the leading cause of workers' compensation claims and occupational injury for people aged 55 years and older. Fortunately, there are some great options for keeping potentially dangerous snow and ice at bay when winter weather hits.

TRUCKS + ATTACHMENTS

A **pickup truck** can be an invaluable tool for property managers year- round. Let's take a look at what a pickup can do during winter weather: With the proper attachments, a pickup can effectively plow snow, haul snow and equipment, and spread salt or other snow melt. For light-duty work, a half-ton pickup is fine, but a three-quarters pickup is typically ideal; larger trucks will have the necessary traction to effectively plow through large areas of heavy snow.



1/2 TON - LIGHT DUTY SNOW REMOVAL



3/4 TON- HEAVY DUTY SNOW REMOVAL

PLOWS



STRAIGHT PLOW

less expensive
cannot maneuver
as well



V-PLOW

more effectively
removes snow that
has frozen overnight

can angle, direct,
and stack snow



BOX PLOW

easily moves large
amounts of snow

cannot fit in tight
spaces

SALT SPREADERS



TAILGATE SPREADER

relatively
inexpensive

requires
frequent refills



V-BOX SPREADER

takes up entire
truck bed

requires
few refills



SNOW BLOWERS

Snow blowers are great to have on hand for smaller snow-covered areas or areas that require tight maneuvering. Both electric and gas snow blowers are available. Electric blowers are less expensive and easier to use; gas blowers, however, offer greater snow-moving power.

ELECTRIC BLOWERS

can clear up to 8" powdery snow and 4" compact snow, compact, lightweight, fume-free

SINGLE-STAGE GAS BLOWERS

can clear up to 10" of snow, cordless, require more maintenance

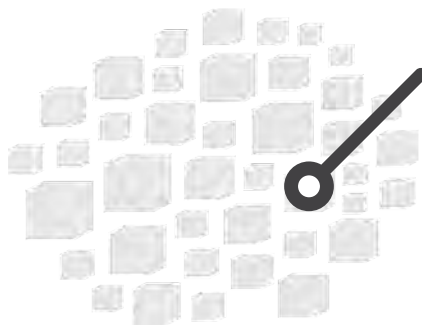
TWO-STAGE GAS BLOWERS

can clear up to 18" of snow, can clear snow from loose ground (i.e. gravel)

SNOW MELT

Snow melt can be distributed over large areas relatively quickly via salt spreaders. Extra attention should be given to walkways and driveways.

It's important to note that most commercial snow melt will damage concrete and roads over time, limiting the longevity of walkways, driveways, roads, and parking lots.

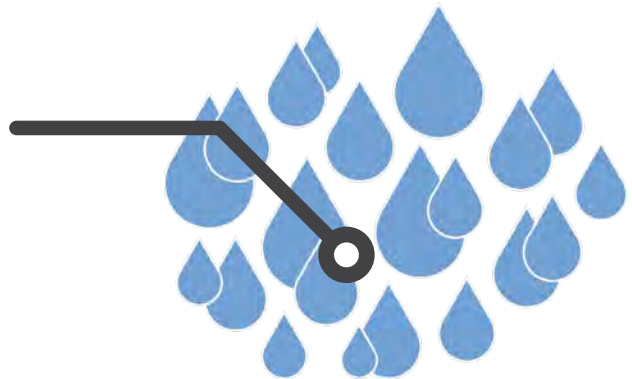


ROCK SALT

lowers freezing point to 23°F
lowest cost

BRINE

cuts back on harmful effects of salt
highest cost



CALCIUM CHLORIDE/ MAGNESIUM CHLORIDE

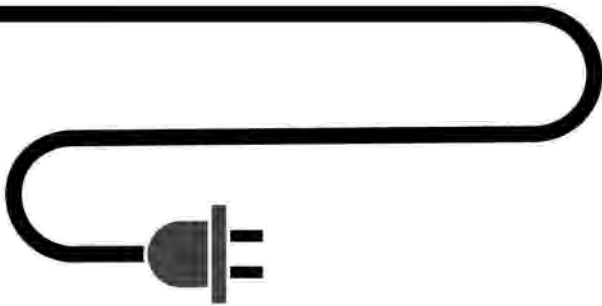
lowers freezing point to -20°F
moderate cost

HEATED GROUND SYSTEMS

Underground heating systems are a maintenance-free option for keeping concrete and asphalt snow and ice free. These systems are installed 3-4 inches below the cement surface during construction

Underground systems are energy efficient, can reach high temperatures, typically use auto on/off, and can have manual controls and switches.

ELECTRIC



Electric underground heating systems utilize insulated, heat-conducting cables that can reach temps up to 220 °F. Electric systems are more expensive to operate but are completely maintenance-free.

HYDRONIC



Hydronic underground heating systems use heated water and antifreeze pumped through rubber tubing. These systems can reach temps up to 175 °F. Additionally, they require yearly maintenance.

SNOW MELTING MATS



SummerStep snow melting mats use radiant heat to melt ice and snow. Snow melting mats provide a unique approach to snow and ice removal in that **they require very little labor or attention.**

Designed to be outside all winter long, SummerStep mats are convenient and environmentally friendly, and eliminate the use of any harsh chemicals that could damage surrounding areas.

Furthermore, SummerStep systems are customizable; connectable mats cover your desired distance

SummerStep snow melting mats help prevent accidents due to slipping and falling in areas with heavy foot traffic: nursing homes, elderly communities, grocery stores, plazas, commercial businesses, residential homes, hotels, ski resorts, restaurants, universities, sports stadiums, hospitals, construction sites, industrial sites, etc.



powerblanket

CUSTOMIZE YOUR SUMMERSTEP SETUP

1 MEASURE THE LOCATION WHERE MATS ARE NEEDED

Grab a tape measure, pencil, and paper and map out where you need Summerstep Mats



2 ASSESS THE COMBINATION OF MATS YOU NEED

After measuring, decide which mats you need: doormat, walkway, and/or stair mats.

3 WHERE IS YOUR POWER SOURCE AND HOW WILL MATS CONNECT?

In order to know the connecting accessories you will need, check the distance from outlets and make a tally of how many mats will connect together.



4 WHAT LEVEL OF CONTROL DO YOU REQUIRE?

You can set it and forget it. Summerstep works great all by itself*. However, if you want more control or custom options, consider Beacon for increased peace of mind.



*For optimal results, remove existing snow and ice prior to installing Summerstep.

WHY USE SUMMERSTEP?



PREVENT INJURY

Protect yourself from injuries resulting from falls on snow and ice.



PRESERVE PLANTS AND CONCRETE

Traditional snow melt can kill hibernating plants and can cause concrete to chip and erode. Melting mats keep both safe!



NO HARSH CHEMICALS

Melting mats are suitable for all environments and pose no threat to the surrounding landscape, pets, or children.



SAVE TIME & EFFORT

Why waste time shoveling over and over again? A snow melting mat can solve your snow and ice problems once and for all.



EASILY INSTALLED

Put it down. Plug it in. Turn it on. That's it! Leave it plugged in all winter long to keep your pathways clear!

powerblanket